



Capital Budget Community Meeting on Future School Facility Projects - Central Loudoun Area Focus

June 30, 2022

LCPS Capital Budget Overview



TABLE OF CONTENTS

LOUDOUN COUNTY PUBLIC SCHOOLS - EXISTING & PLANNED SCHOOLS	3
CAPITAL PLANNING & BUDGETING - EXECUTIVE SUMMARY	9
SCHOOL BOARD ADOPTED 2023 – FY 2028 CAPITAL IMPROVEMENT PROGRAM (CIP) & FY 2029 – FY 2052 CAPITAL PROJECTS FORECAST	29
New Construction	37
Other Projects	43
Capital Renewals & Alterations	51
Previously Approved/Appropriated Projects	79
SCHOOL BOARD ADOPTED FY 2023 – FY 2028 CAPITAL ASSET PRESERVATION PROGRAM (CAPP)	89
LAND ACQUISITION	111
BUILDING CAPACITY	115
FACILITY ANALYSIS	127
Eastern Loudoun Planning District	131
Ashburn Planning District	137
Dulles North Planning District	143
Dulles South Planning District	149
Central Loudoun Planning District	157
Western Loudoun Planning District	165
GLOSSARY OF TERMS.....	173
SUPPLEMENTAL LOUDOUN COUNTY PUBLIC SCHOOLS INFORMATION	
APPENDIX A: September 30 Enrollment History	185
September 30, 2021 Enrollment by School	187
APPENDIX B: Student Assignments Outside of Geographic Planning District.....	189
APPENDIX C: Student Generation Factors	191
APPENDIX D: Building Location Map	193
School Facilities, 2021-2022 School Year	194
APPENDIX E: 2022-2023 Schools by Geographic Planning District and High School Cluster	199

LCPS Capital Budget

Capital Improvement Program (CIP)

Provides six-year student enrollment projections for division and individual schools with an adopted attendance zone

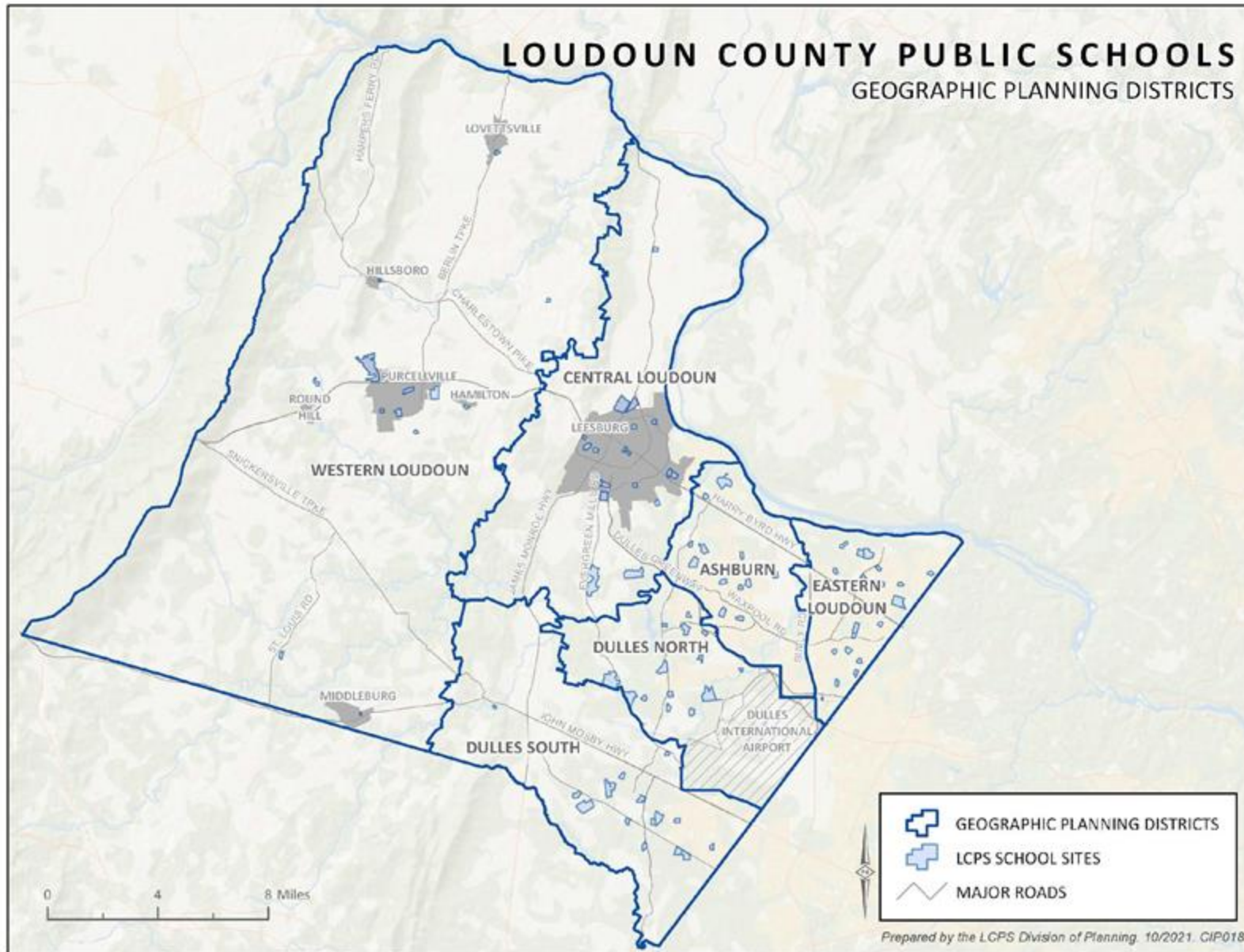
Involves acquisition, development, construction, and/or renovation of facilities, infrastructure, and capital equipment

- Short-Term CIP (Fiscal Years 1-6)
 - Years 1 and 2 Most Critical for Project Identification and Funding
 - Individual Project Pages
- Medium-Term CIP (Fiscal Year 7-10)
 - Corresponds to Board of Supervisors 10-Year Capital Needs Assessment (CNA)
- Long-Term Outlook (Years 11-30)

Capital Asset Preservation Program (CAPP)

Involves repair of major facility components and systems, including repair by replacement (e.g., electrical, plumbing, roofing, HVAC, structural)

- Fiscal Years 1-6
 - Project Specific Detail Provided by Component/System and by Individual School



CENTRAL LOUDOUN GEOGRAPHIC PLANNING DISTRICT

HERITAGE HIGH SCHOOL CLUSTER

Heritage High School

Harper Park Middle School

Cool Spring Elementary School

John W. Tolbert, Jr. Elementary School

LOUDOUN COUNTY HIGH SCHOOL CLUSTER

Loudoun County High School

J. Lupton Simpson Middle School

Catoctin Elementary School

Evergreen Mill Elementary School

Frederick Douglass Elementary School

Sycolin Creek Elementary School

TUSCARORA HIGH SCHOOL CLUSTER

Tuscarora High School

Smart's Mill Middle School

Ball's Bluff Elementary School

Frances Hazel Reid Elementary School

Leesburg Elementary School

Lucketts Elementary School

Facility Analysis

LCPS Planning District Detail

Provides Map of All School Locations with District and Approved (Unbuilt) Residential Development

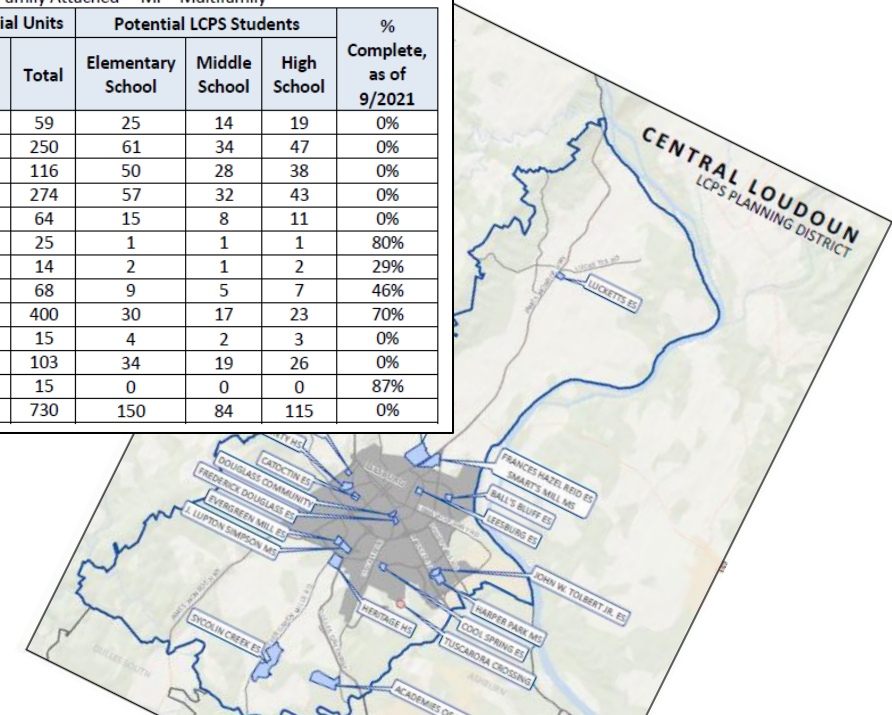
Individual School Detail

Provided by LCPS Planning District, Includes Base Building Capacity, Current Year Enrollment, Six Years of Projected Enrollment

Central Loudoun Planning District
Approved, Unbuilt Residential Development
as of September 2021

SFD - Single Family Detached SFA - Single Family Attached MF - Multifamily

Residential Development	Approved Residential Units				Potential LCPS Students			% Complete, as of 9/2021
	SFD	SFA	MF	Total	Elementary School	Middle School	High School	
BRICKYARD	0	0	59	59	25	14	19	0%
CATTAIL RUN	192	58	0	250	61	34	47	0%
CHURCH AND MARKET	0	0	116	116	50	28	38	0%
CRESCENT PARKE	0	178	96	274	57	32	43	0%
EAST QUARTER (RIVER CREEK VILLAGE)	0	64	0	64	15	8	11	0%
HAMLET AT WOLF CREST FARM	25	0	0	25	1	1	1	80%
KETOCTIN FARM ESTATES	14	0	0	14	2	1	2	29%
LEES CROSSING	68	0	0	68	9	5	7	46%
MEADOWBROOK FARM	400	0	0	400	30	17	23	70%
OATLANDS MANOR	15	0	0	15	4	2	3	0%
POTOMAC STATION MARKETPLACE	0	61	42	103	34	19	26	0%
STONE FOX ESTATES	15	0	0	15	0	0	0	87%
TUSCARORA CROSSING	140	266	324	730	150	84	115	0%



HIGH SCHOOL SUMMARY: CENTRAL LOUDOUN

General Planning District Description

North/West of Goose Creek, East of the Catoctin Mountain Ridgeline, South of the Potomac River

FY 2023 - FY 2028 CIP PLANNING PERIOD

HIGH SCHOOLS	2021-22 BASE CAPACITY	30-Sep-21 ACTUAL ENROLLMENT	2022-23 SCHOOL YEAR PROJECTION			2023-24 SCHOOL YEAR PROJECTION			2024-25 SCHOOL YEAR PROJECTION			2025-26 SCHOOL YEAR PROJECTION			2026-27 SCHOOL YEAR PROJECTION			2027-28 SCHOOL YEAR PROJECTION		
			ENROLL	SPACE	UTILIZE	ENROLL	SPACE	UTILIZE	ENROLL	SPACE	UTILIZE	ENROLL	SPACE	UTILIZE	ENROLL	SPACE	UTILIZE	ENROLL	SPACE	UTILIZE
HERITAGE HS	1740	1491	1530	210	88%	1537	203	88%	1497	243	86%	1501	239	86%	1455	285	84%	1457	283	84%
LOUDOUN COUNTY HS	1495	1504	1576	(81)	105%	1589	(94)	106%	1611	(116)	108%	1637	(142)	109%	1630	(135)	109%	1697	(202)	114%
TUSCARORA HS	1938	1403	1422	516	73%	1462	476	75%	1427	511	74%	1393	545	72%	1350	588	70%	1287	651	66%
	5173	4398	4528	645		4588	585		4535	638		4531	642		4435	738		4441	732	

Central Loudoun: FY 2023 CAPP

Electrical Projects

Evergreen Mill ES; Frances Hazel Reid ES; Leesburg ES; Loudoun County HS

HVAC Projects

Evergreen Mill ES; Loudoun County HS; Smart's Mill MS

Plumbing Projects

Leesburg ES; Sycolin Creek ES

Resurfacing Projects

Evergreen Mill ES; Tuscarora HS

Structure Repair Projects

Cool Spring ES; Frances Hazel Reid ES; JL Simpson MS;
John W. Tolbert Jr, ES; Leesburg ES; Loudoun County HS; Smart's Mill MS

Central Loudoun: FY 2023 – FY 2028 CIP

Capital Renewal & Alteration Projects

- Energy Conservation Projects
- Fine Arts Storage Improvements, Secondary Schools
- High School Baseball/Softball Press Boxes - Heritage HS
- High School Practice Fields, Lighting & Synthetic Turf
- High School Tennis Court Lighting
- High School Weight Room Expansion - Heritage HS
- Modular Classroom Removal
- Privacy Space Conversions
- Security Improvements - Ball's Bluff ES, Evergreen Mill ES, JL Simpson MS, Heritage HS
- School Walking Tracks - JW Tolbert, Jr ES; Leesburg ES; Lucketts ES; Smart's Mill MS
- Unified Communication Systems Replacement

Central Loudoun: FY 2023 – FY 2028 CIP

- Catoctin ES Addition*, Fall 2022
- Historic Douglass HS Renewal*, Fall 2022
- Joint Use Dry Bulk Storage Facility (Public Service Center)*, TBD
- School Security Improvements, Multi-Year (2019-2024)

* Previously Appropriated Projects

The floor plan of the second floor shows a central corridor (F 112) running horizontally. To the left of the corridor, from top to bottom, are: a Classroom (F 116) with four circular tables; a Conference Room (F 115) with a large rectangular table and chairs; a Resource Room (F 114) with a circular table and chairs; and a Storage room (F 119). To the right of the corridor, from top to bottom, are: a Classroom (F 117) with four circular tables; a Staff Toilet (F 117); a Classroom (F 118) with four circular tables; a Classroom (F 119) with four circular tables; and a Storage room (F 119). The plan also includes several restrooms and a central corridor area labeled 'CORRIDOR (F 112)'.





DOUGLASS HIGH SCHOOL RENOVATION



BEYER
BLINDER
BELLE

LSG LANDSCAPE
ARCHITECTURE



BEYER
BLINDER
BELLE

LSG LANDSCAPE
ARCHITECTURE

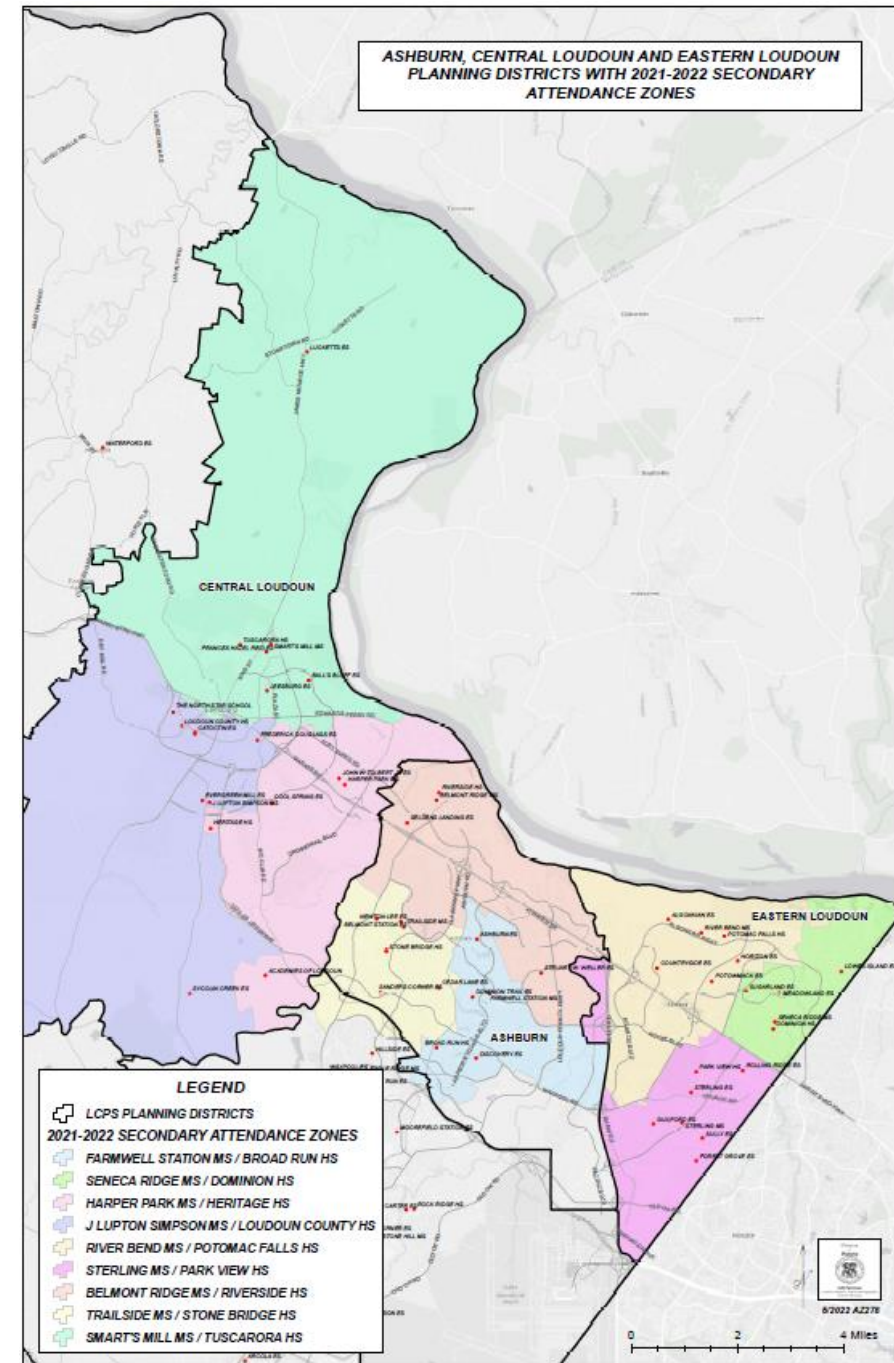


BEYER
BLINDER
BELLE

All Rights Reserved. © 2022 Loudoun County Public Schools

Fall 2022 Secondary School Attendance Zone Change Process

- Central Loudoun, Ashburn & Eastern Loudoun Planning Districts
- October - December 2022
with Dedicated Public Hearings
- Adopted Changes Take Effect in
Fall 2023 (2023-2024 SY)





Tell Us About Loudoun County High School

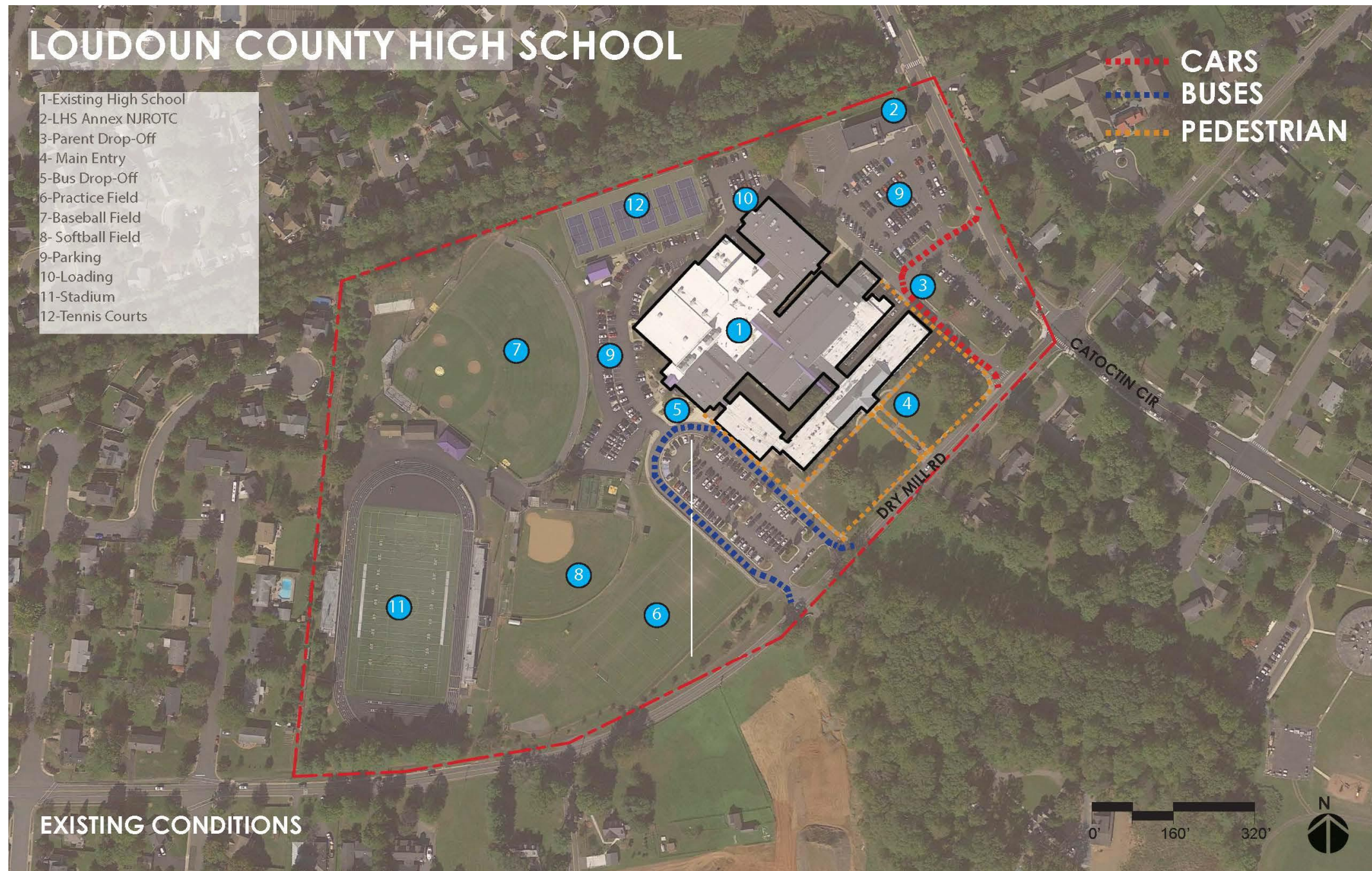
- Overcrowded School
- Classroom Size
- Fine Arts Space
- Restroom Facilities
- Narrow Hallways
- Storage
- Parking
- ??



LOUDOUN COUNTY HIGH SCHOOL

- 1-Existing High School
- 2-LHS Annex NJROTC
- 3-Parent Drop-Off
- 4- Main Entry
- 5-Bus Drop-Off
- 6-Practice Field
- 7-Baseball Field
- 8- Softball Field
- 9-Parking
- 10-Loading
- 11-Stadium
- 12-Tennis Courts

..... CARS
..... BUSES
..... PEDESTRIAN



LCPS Capital Budgets Process

Month	LCPS Capital Budgets Process
June – October	Support Services Meetings for Preparation of Superintendent’s Recommended CIP/CAPP Budgets, Including Six-Year Enrollment Projections
October	Superintendent and Cabinet Review of Recommended CIP/CAPP Budgets
Early November November 15, 2022	Superintendent’s Recommended CIP/CAPP Budgets Presented to School Board
November – December November 28, 2022 & December 5, 2022	School Board Public Hearings and Work Sessions on CIP/CAPP Budgets
December December 13, 2022	School Board Adoption of CIP/CAPP Budgets
February	County Administrator’s Fiscal Plan Presented to Board of Supervisors
February - April	Board of Supervisor Public Hearings and Work Sessions on Fiscal Plan
April	Board of Supervisors Adoption of Fiscal Plan

School Board Adopted FY 2023 - FY 2028 CIP & CAPP



School Board Adopted
FY 2023 - FY 2028
Capital Improvement Program
Capital Asset Preservation Program
FY 2029 - FY 2052 Capital Projects Forecast

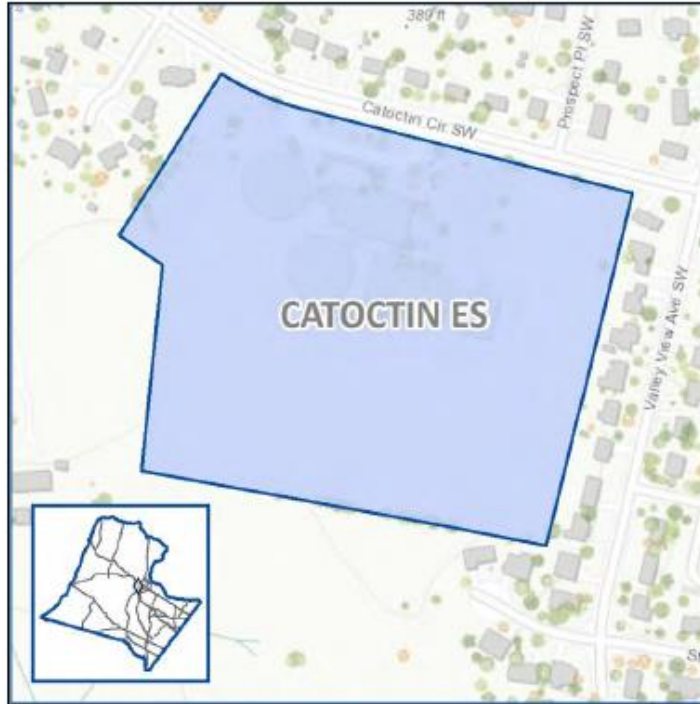
January 11, 2022



Addendum

Capital Budget Community Meeting on Future School Facility Projects - Central Loudoun Area Focus

CATOCTIN ELEMENTARY SCHOOL CLASSROOM ADDITION



An approximate 4,300 square foot, three-classroom classroom addition will be constructed at Catoctin Elementary School to serve instructional needs.

Project Details	
Acres	N/A
Square Feet	4,300
Base Capacity	N/A
Election District	Leesburg
LCPS Planning District	Central Loudoun
Referendum Date	November 2019
School Year Opening	2022-2023

PROJECT	TASK	FUNDING	FY 2023				FY 2024				FY 2025				FY 2026				FY 2027				FY 2028			
			Q1	Q2	Q3	Q4	Q1	Q2	Q3	Q4	Q1	Q2	Q3	Q4	Q1	Q2	Q3	Q4	Q1	Q2	Q3	Q4	Q1	Q2	Q3	Q4
Catoctin ES Three-Classroom Addition	Design	\$ 0.490																								
	Construction and FFE	\$ 3.000	OPEN																							
	Total Appropriations	\$ 3.490																								

THE DOUGLASS SCHOOL RENEWAL



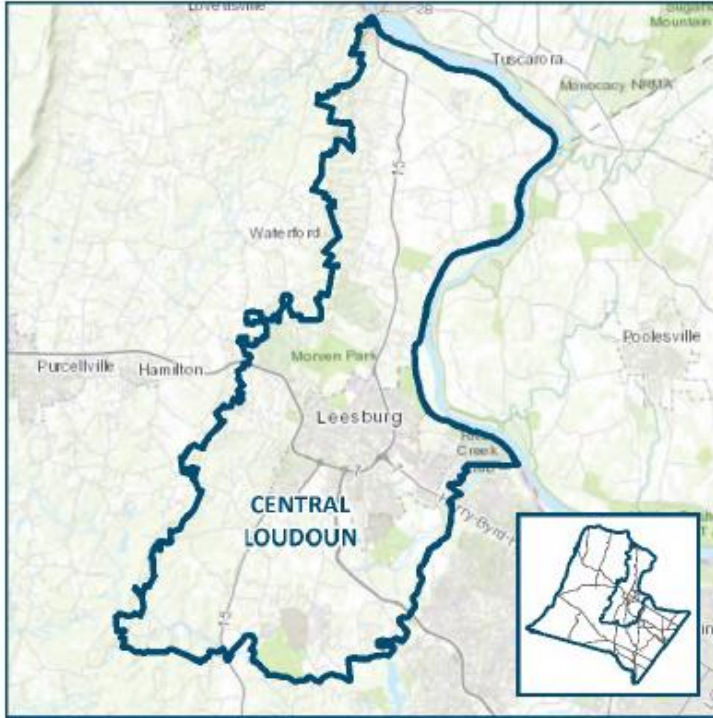
The Douglass School was constructed in 1941 to serve as the first and only African American high school in the county until the end of segregation in 1968. The land was purchased by the African American community and donated to the School Board to secure a place for the secondary education of their children. The building is listed in the Virginia Landmarks Register and the National Register of Historic Places.

The scope of work upholds the significance of the building through historic preservation while providing needed educational programming and community uses - the English Learners (EL) Welcome Center, Head Start, STEP (Starting Towards Excellence in Preschool), and Child Find program. The historic restoration will follow the Secretary of the Interior's Standards for the Treatment of Historic Properties. Site improvements will continue to provide County Parks, Recreation and Community Services (PRCS) recreational uses, event and/or rental opportunities, and parking. Commemorative and interpretive display opportunities within the building and site will be considered based on input from the community and in conjunction with the LCPS Action Plan to Combat Systemic Racism.

Project Details	
Acres	N/A
Square Feet	50,000
Election District	Leesburg
LCPS Planning District	Central Loudoun
Referendum Date	November 2017 and 2020
School Year Opening	2022-2023

PROJECT	TASK	FUNDING	FY 2023				FY 2024				FY 2025				FY 2026				FY 2027				FY 2028			
			Q1	Q2	Q3	Q4	Q1	Q2	Q3	Q4	Q1	Q2	Q3	Q4	Q1	Q2	Q3	Q4	Q1	Q2	Q3	Q4	Q1	Q2	Q3	Q4
Douglass School Renewal	Design	\$ 3.500																								
	Construction and FFE	\$ 30.253	FFE	OPEN																						
	Total Appropriations	\$ 33.753																								

JOINT USE DRY BULK STORAGE FACILITY



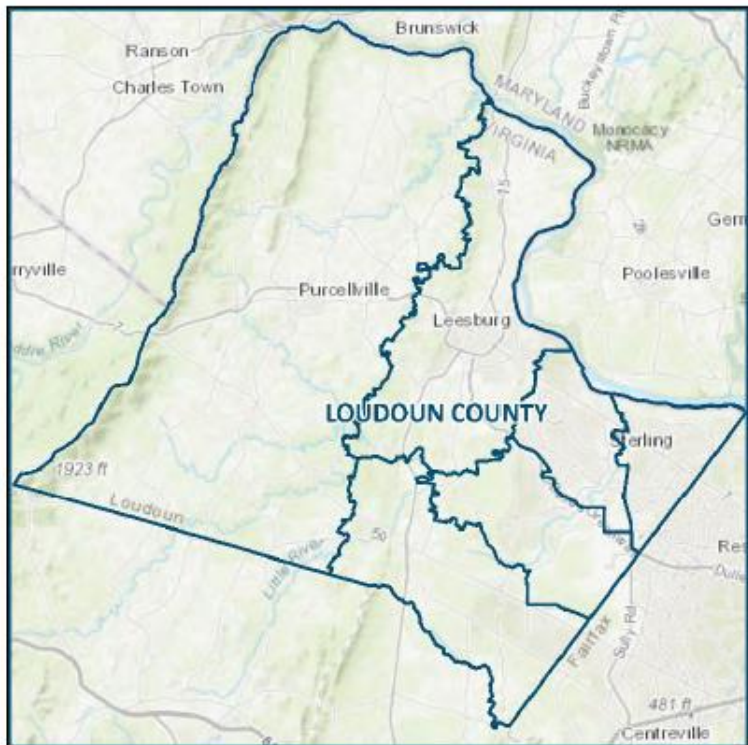
The dry bulk storage facility and two-bay garage will be used by both LCPS and Loudoun County. The facility will include dry storage for approximately 6,000 tons of winter road mix materials and sand/manufactured sand to be used on LCPS and County-owned facility parking lots and driveways during inclement weather. The facility will include a covered, lighted, paved loading area for plow trucks with salt/sand spreaders. The project also provides for a small engine repair shop, covered storage, and outdoor storage areas to be used by LCPS.

A site needs to be acquired or identified for the facility, preferably in the Central Loudoun Planning District.

Project Details	
Acres	TBD
Square Feet	26,000
Base Capacity	N/A
Election District	TBD
LCPS Planning District	TBD
Referendum Date	N/A
School Year Opening	TBD

PROJECT	TASK	FUNDING	FY 2023				FY 2024				FY 2025				FY 2026				FY 2027				FY 2028			
			Q1	Q2	Q3	Q4	Q1	Q2	Q3	Q4	Q1	Q2	Q3	Q4	Q1	Q2	Q3	Q4	Q1	Q2	Q3	Q4	Q1	Q2	Q3	Q4
Joint Use Dry Bulk Storage Facility	Design	\$ 0.820																								
	Construction	\$ 7.380	CONSTRUCTION				OPEN																			
	Total Appropriations	\$ 8.200																								

ELEMENTARY SCHOOL STAGE ACCESS



This project provides funding for accessibility improvements for stages in twelve (12) elementary schools throughout the County.

Elementary Schools receiving access improvements include:

Aldie ES	Dulles South
Algonkian ES	Eastern Loudoun
Banneker ES	Western Loudoun
Catoctin ES	Central Loudoun
Cool Spring ES	Central Loudoun
Emerick ES	Western Loudoun
Leesburg ES	Central Loudoun
Lincoln ES	Western Loudoun
Lucketts ES	Central Loudoun
Meadowland ES	Eastern Loudoun
Sterling ES	Eastern Loudoun
Waterford ES	Western Loudoun

Project Details	
Acres	N/A
Square Feet	N/A
Base Capacity	N/A
Election District	Countywide
LCPS Planning District	Countywide
Referendum Date	N/A
School Year Opening	TBD

HVAC SYSTEM UPGRADES



The project provides HVAC system upgrades at six (6) schools. The HVAC system will be completely replaced at Aldie Elementary School, Middleburg Community Charter School, and Banneker Elementary School. Partial system replacements will be provided at Loudoun Valley High School, Broad Run High School, and Catoctin Elementary School. The upgrades will improve ventilation and airflow performance where temporary high-efficiency particulate air (HEPA) filter systems are currently in place.

The HVAC system upgrades will be installed at:

- Aldie Elementary School
- Banneker Elementary School
- Broad Run High School
- Catoctin Elementary School
- Loudoun Valley High School
- Middleburg Community Charter School

Project Details	
Acres	N/A
Square Feet	N/A
Base Capacity	N/A
Election District	Countywide
LCPS Planning District	Countywide
Referendum Date	TBD
School Year Opening	2021-2022

SCHOOL SECURITY IMPROVEMENTS



Prior appropriations were approved from FY 2019 - FY 2022, and additional appropriations are requested in FY 2023 and FY 2024, to provide secure vestibules, upgraded intrusion detection systems, and exterior door electronic access locks at schools throughout the County.

Funding will provide enhanced security at school campuses to include: door hardware, electronics and controls at building entries to manage visitor access, additional cameras and iPhones, modified office configurations, access deterrent measures, and interim secure vestibules to provide enhanced security until permanent work can be completed. Additional enhanced visitor management hardware, controls and access deterrent measures also need to be applied to other facilities that already have the necessary vestibule configuration. Significant interior modifications of office and media center spaces at nine (9) high schools are proposed to better align staff resources with enhanced entry security systems.

Project Details	
Election District	Countywide
LCPS Planning District	Countywide
Referendum Date	November 2017,2018,2020
School Year Opening	2021-2024

PROJECT	TASK	FUNDING	FY 2023				FY 2024				FY 2025				FY 2026				FY 2027				FY 2028			
			Q1	Q2	Q3	Q4	Q1	Q2	Q3	Q4	Q1	Q2	Q3	Q4	Q1	Q2	Q3	Q4	Q1	Q2	Q3	Q4	Q1	Q2	Q3	Q4
School Security Improvements	Exterior Doors	\$ 4,785	CONSTRUCTION																							
	Alarm Systems	\$ 2,940	CONSTRUCTION																							
	Secure Vestibules	\$ 85,279	CONSTRUCTION																							
	Total Appropriations	\$ 93,004	\$ 11.615				\$ 2.875																			

SCHOOL BUS REPLACEMENT AND ACQUISITION



This project provides funding for the replacement and acquisition of school buses on an annual basis.

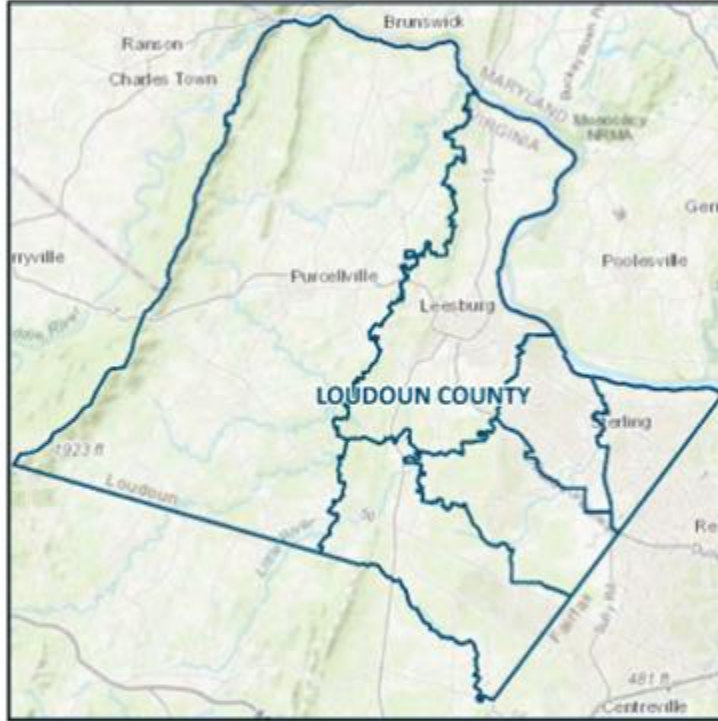
In support of the 2020 Loudoun County School Board resolution on Climate Change, the Division of Transportation began an electric bus pilot program to explore ways to reduce our carbon footprint. LCPS school buses travel over 8 million miles each year and produce over 20 tons of carbon monoxide into the environment. With recent action on climate change and new alternative-fuel products on the market from school bus manufacturers, the LCPS pilot program is designed to test the viability of electric buses to serve our students' transportation needs.

Through a partnership with Dominion Energy, five electric buses have been placed into service and are based (charged) at Park View High School. As part of a 2nd phase of the pilot program, LCPS was recently awarded six (6) electric buses from the Virginia Department of

Environmental Quality, which will be based (charged) at Cardinal Ridge Elementary School and planned for operations in 2022. The pilot program and industry research and monitoring will inform a long-term transportation fleet strategy under development.

PROJECT	TASK	FUNDING	FY 2023				FY 2024				FY 2025				FY 2026				FY 2027				FY 2028			
			Q1	Q2	Q3	Q4	Q1	Q2	Q3	Q4	Q1	Q2	Q3	Q4	Q1	Q2	Q3	Q4	Q1	Q2	Q3	Q4	Q1	Q2	Q3	Q4
School Bus Replacement and Acquisition	Design																									
	Construction																									
	Total Appropriations	\$ 60.300	\$ 8.755				\$ 9.235				\$ 9.745				\$ 10.280				\$ 10.845				\$ 11.440			

LAND ACQUISITION FUND



New school projects are located on sites acquired by proffered conveyance or purchase. When school sites cannot be obtained via proffered conveyance through an approved rezoning, LCPS requests funding to acquire suitable land to develop schools in locations that best serve the County's residents.

Funding is requested to acquire five (5) elementary schools, three (3) middle schools, two (2) high schools, and one (1) support facility during the 30-year CIP from FY 2023 to FY 2052.

Funding for land acquisition is planned up to three (3) years in advance of the commencement of design for school capital projects. Projected residential development in the County's 2019 Comprehensive Plan requires most of the land acquisition funding for new school sites in the first six-years of the CIP. This allows funds to be available early in the CIP to potentially acquire sites before available tracts of land are sold for other purposes.

Project Details	
Acres	TBD
Square Feet	N/A
Base Capacity	N/A
Election District	Countywide
LCPS Planning District	Countywide
Referendum Date	TBD
School Year Opening	N/A

PROJECT	TASK	FUNDING	FY 2023				FY 2024				FY 2025				FY 2026				FY 2027				FY 2028			
			Q1	Q2	Q3	Q4	Q1	Q2	Q3	Q4	Q1	Q2	Q3	Q4	Q1	Q2	Q3	Q4	Q1	Q2	Q3	Q4	Q1	Q2	Q3	Q4
Land Acquisition	Design																									
	Construction																									
	Total Appropriations	\$ 54.485	\$			-	\$			-	\$			2.475	\$			8.750	\$			29.510	\$			13.750

CAPITAL FACILITY RENEWALS AND ALTERATIONS

Prior Years	FY 2023- FY 2024	FY 2025 – FY 2028
Energy Conservation Projects	Energy Conservation Projects	Energy Conservation Projects
Staff Training Center Renewal	Staff Training Center Renewal	Eagle Ridge MS Classroom Addition
Elementary School Stage Access	Park View HS/W.O. Robey HS Addition and Improvements (Design only)	Farmwell Station MS Classroom Addition
Safety & Security Improvements	Safety & Security Improvements	Safety & Security Improvements
Potomac Falls HS Weight Room Expansion	High School Weight Room Expansions	Inclusive Playgrounds
Administrative Office Reconfigurations	Transportation Facility Asphalt Repairs	Transportation Facility Asphalt Repairs
Catoctin ES Addition	High School Baseball/Softball Press Boxes	High School Baseball/Softball Press Boxes
Briar Woods HS Classroom Addition	High School Tennis Court Lighting	High School Tennis Court Lighting
HVAC System Upgrades	Round Hill Center Renewal	Round Hill Center Renewal
Arcola ES Parking Expansion	School Walking Tracks	School Walking Tracks
Park View HS Ticket Booth and Concessions	Modular Classroom Removals	School Bus Washing Station
Waterford ES Modulares	High School Practice Field Turf and Lights	High School Practice Field Turf and Lights
Willard MS Modulares	Banneker ES Addition	Banneker ES Addition
	Fine Arts Storage Improvements	Fine Arts Storage Improvements
	River Bend MS Entrance	Waterford ES Addition
	Unified Communication Systems	Unified Communication Systems
	Privacy Space Conversions	
	Central Vehicle Maintenance/Western Support Center	

ENERGY CONSERVATION PROJECTS



The projects focus on energy conservation in all school buildings, to include:

- Replacing lighting on campus with LED fixtures
- Installing Solar Photo-voltaic arrays
- Replacing electrical transformers
- Recommissioning HVAC energy management systems
- Replacing plumbing fixtures with reduced flow fixtures
- Replacing major mechanical systems
- Applying roof coating and sealant

Funding for the projects are provided from FY 2021 – FY 2029. The focus of the planned work is to reduce utility costs at each school over the next 20 years.

Project Details	
Acres	N/A
Square Feet	N/A
Base Capacity	N/A
Election District	Countywide
LCPS Planning District	Countywide
Referendum Date	TBD
School Year Opening	Various

FINE ARTS STORAGE IMPROVEMENTS



This project provides funding to:

- Design and construct renovations and /or additions to middle schools (17) and high schools (17) to accommodate additional musical instrument storage space within school buildings. Middle School renovations/additions could provide up to 500 square feet of additional space for musical instrument storage at each school. High school renovations/additions could provide up to 900 square feet of additional space for musical instrument storage at each school.
- Design and construct a 900 square foot building for marching band storage, either attached or detached from the main school building as best suited for each site, adjacent to the designated outdoor marching band practice area at each high school.
- Provide for an outdoor marching band observation tower adjacent to each high schools' designated outdoor marching band practice area.

Project Details	
Acres	N/A
Square Feet	TBD
Base Capacity	N/A
Election District	Countywide
LCPS Planning District	Countywide
Referendum Date	TBD
School Year Opening	TBD

HIGH SCHOOL PRACTICE FIELDS



Funding will be provided to install athletic field lighting and synthetic turf to ensure all high schools in the County have two lighted, synthetic turf fields.

The installation of synthetic turf and lights will allow teams to extend the amount of time the fields can be in use for high school athletic teams for practices or matches. The additional high school fields will also be used for County Parks and Recreation athletic programs when the fields are not in use by the high schools.

The project will install synthetic turf at the nine (9) high schools in the County that do not already have a practice field with synthetic turf: Loudoun County High School, Broad Run High School, Potomac Falls High School, Heritage High School, Stone Bridge High School, Dominion High School, Briar Woods High School, Freedom High School, and Tuscarora High School. All high schools in the County will have athletic field lighting installed at one practice field per school.

Project Details	
Acres	N/A
Square Feet	N/A
Base Capacity	N/A
Election District	Countywide
LCPS Planning District	Countywide
Referendum Date	TBD
School Year Opening	Various

HIGH SCHOOL TENNIS COURT LIGHTING

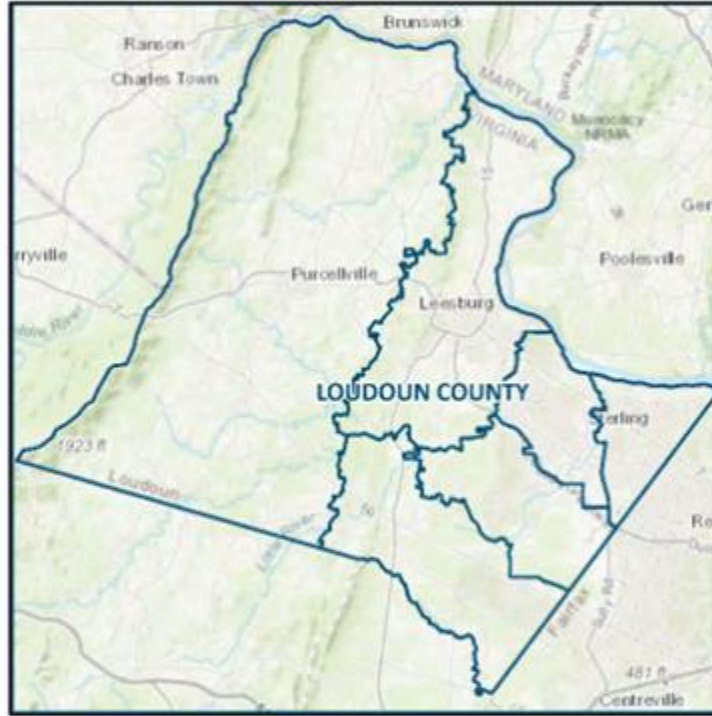


Beginning in FY 2023, funding is requested to install tennis court lights at each LCPS high school where lights do not currently exist. Lighting improvements will be completed over a three-year period. The installation of lights will allow teams to wait out weather delays, avoid the postponement of matches due to loss of light, and enable students to stay in school for the entire instruction day for regular season matches while still completing full length matches.

The fourteen (14) high schools where lights will be installed include: Briar Woods High School, Broad Run High School, Dominion High School, Freedom High School, Heritage High School, John Champe High School, Loudoun County High School, Loudoun Valley High School, Potomac Falls High School, Riverside High School, Rock Ridge High School, Stone Bridge High School, Tuscarora High School, and Woodgrove High School.

Project Details	
Acres	N/A
Square Feet	N/A
Base Capacity	N/A
Election District	Countywide
LCPS Planning District	Countywide
Referendum Date	TBD
School Year Opening	2023-2024 2024-2025 2025-2026

HIGH SCHOOL WEIGHT ROOM EXPANSIONS



Funding will provide for the expansion of the existing weight rooms at Dominion High School, Heritage High School, and Potomac Falls High School. The weight room expansions will be completed over a three-year period, beginning with Potomac Falls High School in FY 2022.

LCPS collected \$125,000 in cash proffers from the Sterling Meadow rezoning (ZMAP-2019-0007) towards the weight room expansion at Potomac Falls High School.

The expansions are proposed to accommodate increased participation and team/sport opportunities at the high school level. Current prototype high schools have additional space to address the increased need.

Project Details	
Acres	N/A
Square Feet	TBD
Base Capacity	N/A
Election District	Algonkian, Catoclin, Sterling
LCPS Planning District	Central, Eastern
Referendum Date	TBD
School Year Opening	2022-2023 2023-2024 2024-2025

MODULAR CLASSROOM REMOVALS



This project provides funding to remove modular classrooms at schools where the useful life of the modular has been met or exceeded, or where continued maintenance of the modular is cost prohibitive.

Where applicable and practical, every intent will be made to provide additional space at the school to make up for the loss of modular classrooms.

Project Details	
Acres	N/A
Square Feet	N/A
Base Capacity	N/A
Election District	Countywide
LCPS Planning District	Countywide
Referendum Date	TBD
School Year Opening	TBD

PRIVACY SPACE CONVERSIONS



This project provides funding to:

- Continue to expand access to shower rooms, locker rooms, and other private spaces through renovations to locker rooms to provide private shower and changing areas in middle schools and high schools.
- Continue to expand access through renovations to restrooms to provide single occupant, private restrooms, to accommodate students and staff that desire to use private restroom facilities in each school facility.

Staff continues to establish recommendations in consultation with school principals and professional design consultants. The scope of work may vary by school and may be revised as lessons are learned at the school level.

In accordance with School Board action, improvements must be complete by 2026.

Project Details	
Acres	N/A
Square Feet	TBD
Base Capacity	N/A
Election District	Countywide
LCPS Planning District	Countywide
Referendum Date	TBD
School Year Opening	TBD

SAFETY AND SECURITY IMPROVEMENTS



This project provides funding for closed circuit television (CCTV) improvements, security cameras, and servers at schools throughout the County. This funding is being provided in addition to planned appropriations for the School Security Improvements project in the CIP, which provides for external door access improvements and secure vestibules at schools throughout the County.

The following schools will be addressed in FY 2023:

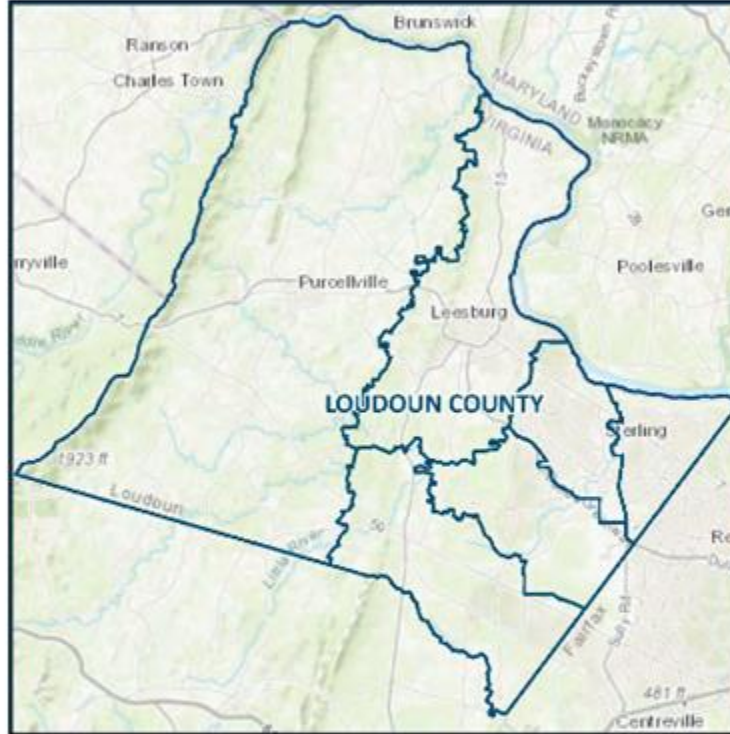
Elementary Schools - Ashburn, Ball's Bluff, Dominion Trail, Evergreen Mill, Hillside, Lovettsville, Lowes Island, Mill Run, Potowmack, Sanders Corner, Sugarland.

Middle Schools - Eagle Ridge, J.L. Simpson, Seneca Ridge.

High Schools – Dominion, Heritage, Rock Ridge.

Project Details	
Acres	N/A
Square Feet	N/A
Base Capacity	N/A
Election District	Countywide
LCPS Planning District	Countywide
Referendum Date	N/A
School Year Opening	Various

SCHOOL WALKING TRACKS



The construction of walking tracks at fifteen (15) schools are recommended to enhance the physical education instructional program at schools that currently do not have a track.

Elementary Schools (12) –Aldie, Algonkian, Countryside, Guilford, John W. Tolbert Jr., Leesburg, Lincoln, Lucketts, Rolling Ridge, Rosa Lee Carter, Sterling, Waterford.

Middle Schools (3) - Seneca Ridge, Smart's Mill, Stone Hill.

The scope of the project may be reduced depending on the allowable use of school cash proffers, as determined by the Town of Leesburg, to provide for school walking tracks at schools located within the Town limits.

Project Details	
Acres	N/A
Square Feet	N/A
Base Capacity	N/A
Election District	Countywide
LCPS Planning District	Countywide
Referendum Date	TBD
School Year Opening	Various

UNIFIED COMMUNICATION SYSTEMS



Unified Communication Systems (UC) are the modern replacement for school intercom, public address, paging, and telephone systems. They create a single integrated system to support school communications and safety. UC systems are IP-based and require new cabling as they do not utilize existing speaker or telephone cabling.

Many of the current systems in LCPS are over 20 years old with the oldest equipment still in use from the 1970's. Funding is provided to establish a yearly refresh cycle for the legacy system equipment and to provide additional data cabling to support network-connected UC components.

Project Details	
Acres	N/A
Square Feet	N/A
Base Capacity	N/A
Election District	Countywide
LCPS Planning District	Countywide
Referendum Date	TBD
School Year Opening	TBD



Capital Budget Community Meeting on Future School Facility Projects - Central Loudoun Area Focus

June 30, 2022
